

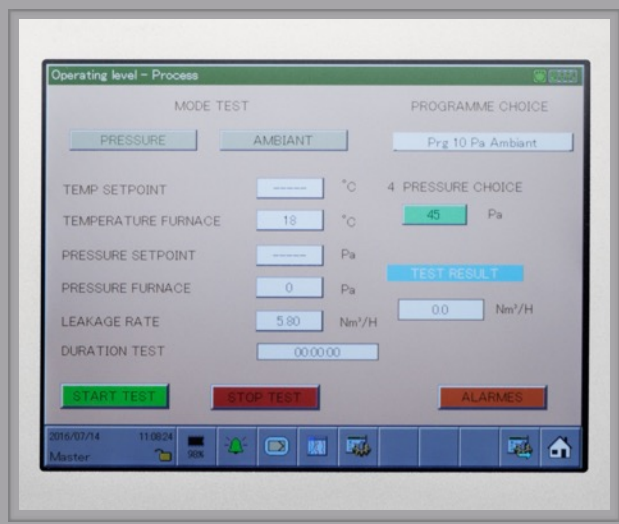


## Smoke Tightness Test Rig (EN 1634-3)

This test rig allows evaluating smoke tightness from one side of a test specimen. The test can be performed at ambient temperature (20°C) and medium temperature (200°C) for several pressures (until 50Pa) as defined in the test conditions specified in the EN 1634-3 standard. The leakage rate of this installation is lower than 10m<sup>3</sup>/h. The test rig is equipped in standard with thermocouples, a pressure sensor, a fan system, an air flow meter and a heat exchanger.

## FULLY AUTOMATED CONTROL SOFTWARE

This user-friendly control software allows to select the test program for the test element by selecting the desired temperature and pressure. The leakage rate is measured all along the test and the result is displayed and archived after this one.



### Leakage rate measurement

Thanks to a differential pressure flow meter, the leakage rate can be measured on both sides of the test specimen without rotating this one.



### Clamping the test specimen

Special closure systems at the front side of the test rig together with a specific gasket bring an optimally sealed test chamber.



**BTF S.A**

Rue de Waremmé 124  
B-4530 Villers le Bouillet  
Belgique

Mail: [info@btf.be](mailto:info@btf.be)

Phone: +32 (4) 259.65.28

Web Site: [www.btf.be](http://www.btf.be)